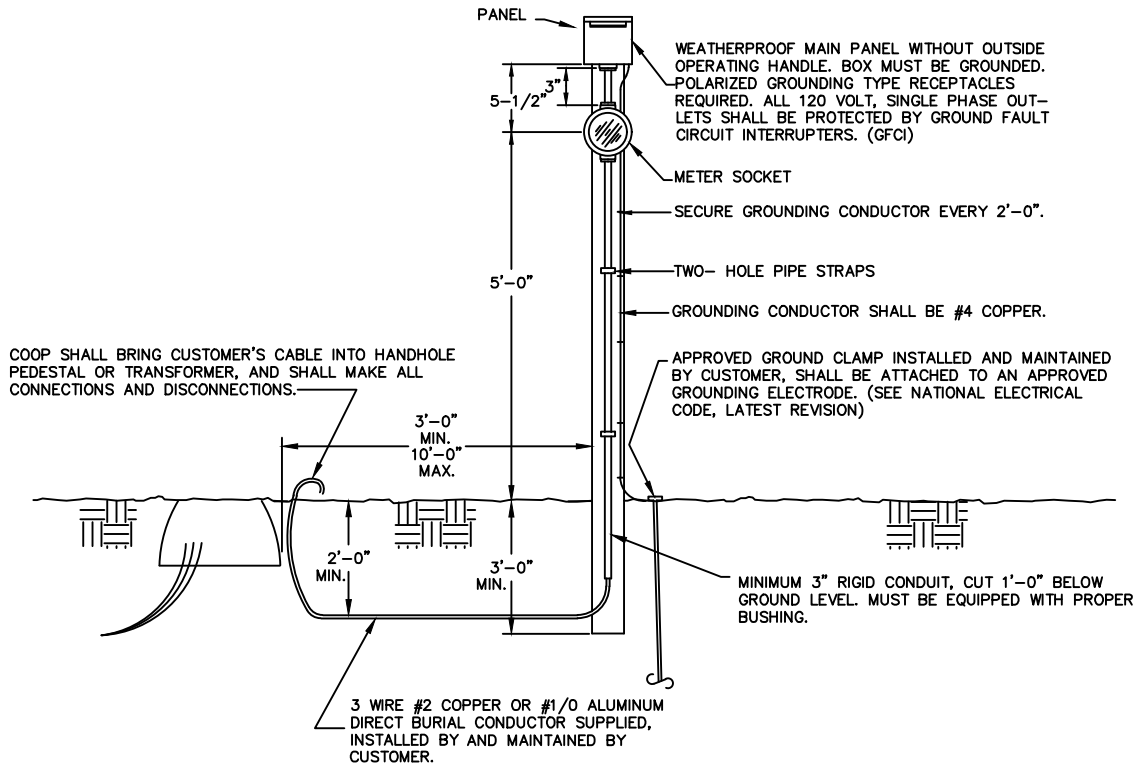


SOCKET WIRING DIAGRAM



NOTES:

1. ALLOW 3'-0" OF CONDUCTOR AT THE COOP'S POINT OF ATTACHMENT. NEUTRAL CONDUCTOR MUST BE IDENTIFIED.
2. SUPPORT MUST BE LOCATED AS NEAR AS POSSIBLE TO THE COOP'S POINT OF ATTACHMENT. CARE SHOULD BE EXERCISED IN CHOOSING LOCATION OF SUPPORT TO INSURE PROPER CLEARANCE FROM DRIVEWAYS, CONSTRUCTION AREA, ETC.
3. SUPPORT TO BE 4" X 4" X 10'-0" PRESSURE TREATED WOOD.
4. GROUND WIRE TO TERMINATE IN PANEL WHEN USING ROUND SOCKET.
5. CALL COOP FOR LOCATION.
6. INTEGRATED METER SOCKET/PANEL MAY BE USED IF DESIRED. CENTER OF METER SOCKET STILL TO BE MOUNTED AT 5' ABOVE GROUND LEVEL.

SINGLE PHASE METERED CONSTRUCTION POLE FROM UNDERGROUND SOURCE-100 AMPERE MAXIMUM

2	UPDATES	10/20
1	VARIOUS	10/97
NO.	REVISION	DATE

JOE WHEELER ELECTRIC MEMBERSHIP CORPORATION
TRINITY, ALABAMA

SCALE: NS

UG TEMP